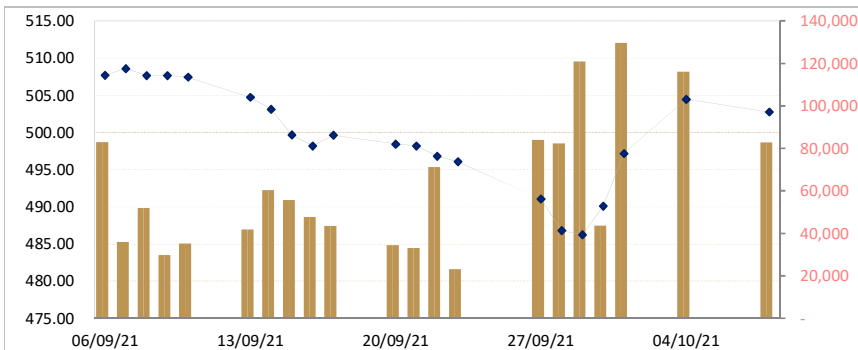


TEL: (855) 23 999 966 / 723 388 / 015 723 388 / 012 840 125 / E-MAIL: INFO@ACLEDASECURITIES.COM.KH

CAMBODIA SECURITIES EXCHANGE: MARKET SUMMARY

Index / Companies	Previous Day	Open	Closing	Change	% Change	From Listed till Today		Volume	Value (KHR)
						High	Low		
Index	504.46	505.60	502.75	-1.71	▼0.34	1,108	305	82,853	907,027,510
PPWSA	7,000	7,000	7,000	0	0.00	8,400	-4	1,028	7,179,620
GTI	4,400	4,440	4,420	20	▲0.45	9,780	2,110	103	455,300
PPAP	14,980	14,800	14,980	0	0.00	16,780	4,600	15,554	211,728,920
PPSP	2,050	2,050	2,050	0	0.00	3,270	1,120	7,373	15,021,040
PAS	13,580	13,580	13,580	0	0.00	23,800	4,620	933	5,421,420
ABC	11,560	11,600	11,500	-60	▼0.52	23,600	10,800	56,865	656,988,500
PEPC	3,160	3,150	3,150	-10	▼0.32	3,990	2,700	997	5,421,420

CSX DAILY STOCK INDEX (Last 30 Days)



Securities News

CAMBODIA: MARKET WATCH

The Cambodia Securities Exchange continued a relative surge, rising 1.44% to 497.19 points. PWSA was listed at 7,020 riels a share. GTI was listed at 4,460 riels/share. PPAP was listed at 14,900 riels/share. PPSP was listed at 2,050 riels a share. PAS was listed at 13,580 riels /share. ABC was listed at 11,300 riels/share. PEPC was listed at 3,160 riels/share. The only company on the Growth Board, DBDE, was listed at 2,280 riels a share. (Khmer Times)

Business & Economic News

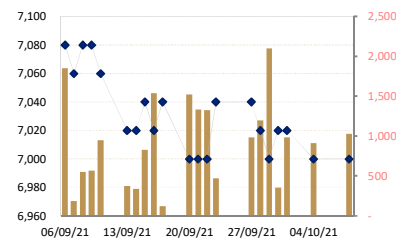
CAMBODIA: Cambodia exports \$3 bn agricultural products in first nine months

Cambodia exported agricultural products worth a total of 5.9 million tons from January to September this year, a year-on-year increase of 88 % compared with the same period last year, showing positive growth of the sector despite the Covid-19 pandemic. Figures from the Ministry of Agriculture, Forestry and Fisheries show the main agricultural products were milled rice, paddy rice, mangoes, bananas, cassava, cashew nuts, rubber, corn and pepper. The agricultural products earned some \$3,489 million, of which milled rice export was valued at \$350 million, paddy rice at \$429 million and non-agriculture products at \$2,711 million, read a report on the data. The January-September export of milled rice saw a decrease of 15.9 % to 410,698 tons to 68 foreign markets, while paddy rice exports rose by 82 % to 1,627 million tons. Minister of Agriculture, Forestry and Fisheries Veng Sakhon said the amount of milled

LISTED COMPANIES

PPWSA	Phnom Penh Water Supply Authority
Industry	Water Utility
GTI	Grant Twins Int. (Cambodia) Plc.
Industry	Apparel Clothing
PPAP	Phnom Penh Autonomous Port.
Industry	Port Services
PPSP	Phnom Penh SEZ PLC.
Industry	SEZ Developer
PAS	Sihanouk Ville Autonomous Port.
Industry	Port Services
ABC	ACLEDA Bank
Industry	Financial
PEPC	PESTECH Cambodia
Industry	Electricity

PPWSA DAILY STOCK PRICE



rice export was largely because of the price of transport surging during the pandemic. However, the export of non-rice products saw an increase during the period. The total non-rice agricultural products increased by 107 %. *(Khmer Times)*

CAMBODIA: Agricultural exports up 46 percent in first nine months

Some 3,894,485 tonnes of agricultural products, besides milled rice and paddy rice, have been exported to foreign markets during the first nine months of this year, despite the global COVID-19 crisis. The figure represents an increase by 46.47 percent compared to the same period in 2020, pointed out a report from the Ministry of Agriculture, Forestry, and Fisheries. According to the source, the exported agricultural products included cassava, cashew nuts, corn, fresh banana, pomelos, mangos, pepper, chili, and so on. While the export of corn, tobacco, and mixed vegetables saw a decline, that of fresh chili, fresh banana, pomelos, mango products (fresh, jam, syrup), cashew nuts, soybeans, beans, and pepper increased sharply, from 45 to over 500 percent, it underlined. In brief, the report said, from January to September Cambodia exported almost 100 types of agriculture products, apart from milled rice and paddy rice, to different countries around the world, generating an estimated income of about \$2,710 million. *(Khmer Times)*

CAMBODIA: 75 investment projects approved in first eight months this year

The Council for the Development of Cambodia approved 75 private investment projects outside special economic zones during the first eight months of the year, a year-on-year decrease of 28 percent. A report from the Ministry of Economy and Finance issued earlier this month stated that all private investment projects amounted to a total of \$1,106 million, down 52.5 percent from the same period last year. These new projects created about 57,000 jobs, down 32.3 percent compared to the same period last year. The approved projects are industrial investment projects in the energy, services and tourism sectors, the report said. The ministry noted in the report that the economy has been affected by the negative impact of the Covid-19 pandemic, especially the February 20 Community Event, which has put a lot of pressure on main sectors of Cambodia's economic growth. Last year, CDC approved 238 investment projects worth a total of \$8.2 billion, down 12 per cent from 2019. *(Khmer Times)*

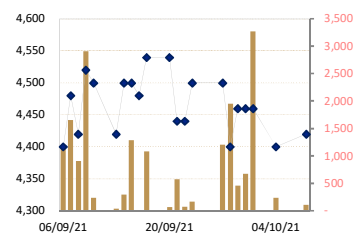
CAMBODIA: Pepper exports up nearly 563 %

In the first nine months of the year, Cambodia exported more than 27,316 tonnes of pepper, up nearly 563% from the same period last year, according to the Agriculture Ministry. This amount of pepper has been exported to more than 20 destinations around the world, including Vietnam, Germany, Thailand, India, France, Belgium, Taiwan, Poland, the Czech Republic, Japan, South Korea, Russia, Singapore, the USA, Switzerland, Sweden, the UK, Australia, Canada, Kazakhstan, and the United Arab Emirates. According to statistics, Vietnam is the prominent buyer of Cambodian pepper with total of 26,686 tonnes, followed by Germany with 314 tonnes, Thailand with 180 tonnes, France with 31 tonnes, and Belgium with nearly 16 tonnes. Pepper is grown in many areas in Cambodia, including Kampong Cham, Tboung Khmum, Kampot and Kep provinces. Kampot pepper is the most well-known and fetches a high price. It was granted a geographical indication (GI) from the EU in 2016 and from the World Trade Organization (WTO) in 2010. *(Khmer Times)*

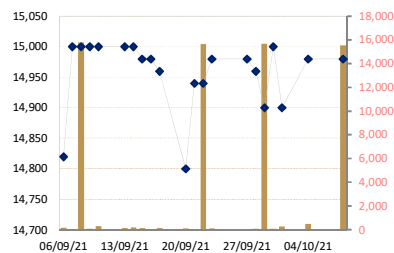
CAMBODIA: Travel author/industry adviser shares insights on Kingdom's reopening

With the three-day Pchum Ben holiday starting tomorrow many Cambodians are heading to tourist destinations around the country. Searches on booking aggregator Trivago show that a lot of hotels in popular destinations are already full. So what happens when the country reopens to foreign tourists? Will there be enough hotels and tour operators to cope and what can foreigners expect from the "new normal"? Nick Ray wrote the book when it comes to Cambodian tourism. He's the author of the Lonely Planet guidebooks for the country, along with those for Laos, Myanmar and Vietnam. He's also a tour leader, tourism lecturer and sustainable tourism consultant for nongovernmental organisations and the World Bank. He spoke with Khmer Times reporter Michael Firn about the state of the tourist industry in Cambodia and the outlook once the country has reopened. KT: There's talk of Cambodia opening up to foreign tourists as early as November. Given that it's been a lean two years for the industry and many companies have gone under how well prepared do you think the Kingdom is for the return of international visitors? NR: It has been an awful 18 months. Siem Reap International Airport hasn't seen an international flight since March 26, 2020. A lot of jobs have been lost in hospitality, hotels, restaurants, tour operators, so it has been a real struggle. However, I do think that people are ready. *(Khmer Times)*

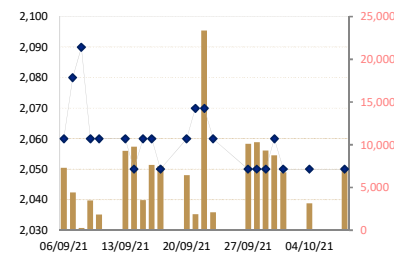
GTI DAILY STOCK PRICE



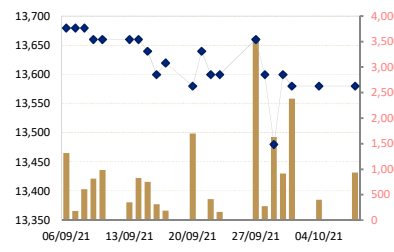
PPAP DAILY STOCK PRICE



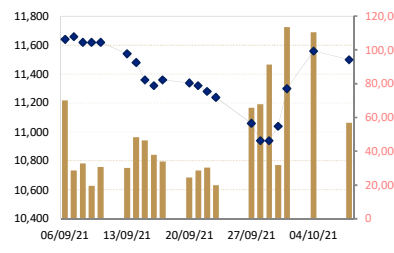
PPSP DAILY STOCK PRICE



PAS DAILY STOCK PRICE



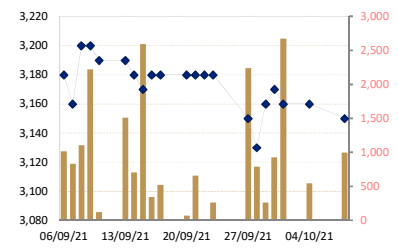
ABC DAILY STOCK PRICE



CAMBODIA: Koh Kong tourist numbers reduced by nearly 60%

The number of tourists visiting Koh Kong province during the three days of Pchum Ben festival this year decreased by almost 60%, when compared to last year's holiday. Less than half of the usual number of tourists came to stay and visit tourist spots around the province, according to officials from the Koh Kong Provincial Department of Tourism, since the province is experiencing a Covid-19 issue, which has yet to subside in some places. Local authorities have tightened health and safety measures for all people, including the Buddhist worshippers who bring food to the monks and visit the pagoda to mark Pchum Ben. In the face of the new Covid-19 crisis, a large number of people are worried, and do not dare to travel far from their homes, even to visit pagodas. According to a report released yesterday by the Koh Kong Provincial Department of Tourism, the total number of national and international tourists staying and visiting resorts in the province during the three-day Pchum Ben festival was 11,248. These numbers are down about 57 % from the same period last year. Meanwhile, there were only 1,809 visitors to the ecotourism communities, also a large reduction, when compared with previous years. The tourism monitoring team of the Koh Kong Provincial Department of Tourism reported that the substantial drop in the number of tourists during the three-day Pchum Ben festival was due to the spread of the deadly virus. (Khmer Times)

PEPC DAILY STOCK PRICE



Historical Data from 15/ September /21 To 08/October/21

Date	Index/Stock	Open	High	Low	Close	Change	Δ (%)	Volume	Value (mil. KHR)	Value (\$)*	Mar. Cap. (mil. KHR)
08/10/21	Index	505.60	510.60	500.82	502.75	1.71	▲0.34%	82,853	907,027,510	226,757	7,625,042
	PPWSA	7,000	7,000	6,960	7,000	0.00	0.00%	1,028	7,179,620	1,794.91	608,812
	GTI	4,440	4,440	4,420	4,420	20.00	▲0.45%	103	455,300	113.83	176,800
	PPAP	14,800	14,980	14,800	14,980	0.00	0.00%	15,554	211,728,920	52,932.23	309,852
	PPSP	2,050	2,050	2,030	2,050	0.00	0.00%	7,373	15,021,040	3,755.26	147,344
	PAS	13,580	13,600	13,420	13,580	0.00	0.00%	933	12,546,140	3,136.54	1,164,783
	ABC	11,600	11,780	11,460	11,500	-60.00	▼0.51%	56,865	656,988,500	164,247.13	4,981,375
PEPC	3,150	3,160	3,110	3,150	-10.00	▼0.31%	997	3,107,990	777.00	236,077	
04/10/21	Index	505.76	512.84	500.38	504.46	7.27	▲1.46%	116,162	1,313,205,680	328,301	7,650,982
	PPWSA	7,020	7,020	6,980	7,000	-20.00	▼0.28%	913	6,401,920	1,600.48	608,812
	GTI	4,420	4,440	4,400	4,400	-60.00	▼1.34%	237	1,051,240	262.81	176,000
	PPAP	14,800	15,000	14,800	14,980	80.00	▲0.53%	481	7,180,100	1,795.03	309,852
	PPSP	2,050	2,050	2,030	2,050	0.00	0.00%	3,149	6,415,070	1,603.77	147,344
	PAS	13,620	13,620	13,480	13,580	0.00	0.00%	399	5,421,420	1,355.36	1,164,783
	ABC	11,520	11,840	11,420	11,560	260.00	▲2.30%	110,436	1,285,007,760	321,251.94	5,007,364
PEPC	3,160	3,170	3,150	3,160	0.00	0.00%	547	1,728,170	432.04	236,826	
01/10/21	Index	491.87	505.60	491.75	497.19	7.08	▲1.44%	129,799	1,365,849,690	341,462	7,540,844
	PPWSA	7,040	7,040	6,980	7,020	0.00	0.00%	983	6,873,620	1,718.41	610,552
	GTI	4,380	4,480	4,320	4,460	0.00	0.00%	3,267	14,276,940	3,569.24	178,400
	PPAP	14,900	15,000	14,900	14,900	-100.00	▼0.66%	278	4,145,400	1,036.35	308,197
	PPSP	2,090	2,090	2,040	2,050	-10.00	▼0.48%	6,815	13,963,850	3,490.96	147,344
	PAS	13,660	13,700	13,460	13,580	-20.00	▼0.14%	2,386	32,193,740	8,048.44	1,164,783
	ABC	11,100	11,680	11,100	11,300	260.00	▲2.35%	113,396	1,286,043,980	321,511.00	4,894,742
PEPC	3,170	3,180	3,120	3,160	-10.00	▼0.31%	2,674	8,352,160	2,088.04	236,826	
30/09/21	Index	489.30	497.30	487.23	490.11	3.88	▲0.80%	43,590	390,801,180	97,700	7,433,474
	PPWSA	7,060	7,060	7,000	7,020	20.00	▲0.28%	353	2,471,080	617.77	610,552
	GTI	4,440	4,460	4,380	4,460	0.00	0.00%	674	2,954,260	738.57	178,400
	PPAP	15,000	15,000	15,000	15,000	100.00	▲0.67%	80	1,200,000	300.00	310,265
	PPSP	2,050	2,070	2,040	2,060	10.00	▲0.48%	8,792	18,023,310	4,505.83	148,063
	PAS	13,720	13,720	13,440	13,600	120.00	▲0.89%	915	12,367,540	3,091.89	1,166,499
	ABC	10,960	11,280	10,960	11,040	100.00	▲0.91%	31,849	350,863,680	87,715.92	4,782,120
PEPC	3,160	3,170	3,130	3,170	10.00	▲0.31%	927	2,921,310	730.33	237,576	
29/09/21	Index	486.34	487.95	481.73	486.23	0.57	▲0.12%	120,894	1,265,926,090	316,482	7,374,589
	PPWSA	7,020	7,020	6,800	7,000	-20.00	▼0.28%	2,102	14,603,020	3,650.76	608,812
	GTI	4,400	4,460	4,380	4,460	60.00	▲1.36%	458	2,011,520	502.88	178,400
	PPAP	14,960	15,000	14,900	14,900	-60.00	▼0.40%	15,672	213,373,360	53,343.34	308,197
	PPSP	2,050	2,050	2,020	2,050	0.00	0.00%	9,343	18,992,070	4,748.02	147,344
	PAS	13,720	13,720	13,480	13,480	-120.00	▼0.88%	1,630	21,998,800	5,499.70	1,156,206
ABC	10,900	11,000	10,800	10,940	0.00	0.00%	91,427	994,127,800	248,531.95	4,738,803	

	PEPC	3,120	3,160	3,120	3,160	30.00	▲0.95%	262	819,520	204.88	236,826
	Index	490.54	490.59	485.47	486.80	4.27	▲0.87%	82,429	788,901,000	197,225	7,383,213
28/09/21	PPWSA	7,040	7,040	7,000	7,020	-20.00	▼0.28%	1,195	8,365,800	2,091.45	610,552
	GTI	4,500	4,520	4,400	4,400	-100.00	▼2.22%	1,951	8,658,340	2,164.59	176,000
	PPAP	14,960	14,960	14,900	14,960	-20.00	▼0.13%	82	1,225,520	306.38	309,438
	PPSP	2,060	2,060	2,030	2,050	0.00	0.00%	10,314	20,985,560	5,246.39	147,344
	PAS	13,760	13,760	13,600	13,600	-60.00	▼0.43%	274	3,732,060	933.02	1,166,499
	ABC	11,020	11,020	10,900	10,940	-120.00	▼1.08%	67,822	743,461,620	185,865.41	4,738,803
	PEPC	3,130	3,150	3,120	3,130	-20.00	▼0.63%	791	2,472,100	618.03	234,578
	Index	494.93	495.49	490.86	491.07	5.00	▲1.01%	83,946	820,435,160	205,109	7,447,991
27/09/21	PPWSA	7,040	7,040	6,960	7,040	0.00	0.00%	985	6,902,980	1,725.75	612,291
	GTI	4,500	4,500	4,380	4,500	0.00	0.00%	1,207	5,322,500	1,330.63	180,000
	PPAP	14,980	14,980	14,980	14,980	0.00	0.00%	58	868,840	217.21	309,852
	PPSP	2,060	2,060	2,040	2,050	-10.00	▼0.48%	10,125	20,717,900	5,179.48	147,344
	PAS	13,700	13,860	13,520	13,660	60.00	▲0.44%	3,572	48,921,580	12,230.40	1,171,645
	ABC	11,200	11,200	11,060	11,060	-180.00	▼1.60%	65,761	730,689,100	182,672.28	4,790,783
	PEPC	3,190	3,190	3,120	3,150	-30.00	▼0.94%	2,238	7,012,260	1,753.07	236,077
	Index	496.82	497.70	495.77	496.07	0.75	▲0.15%	23,126	236,959,370	59,240	7,523,782
23/09/21	PPWSA	7,060	7,060	6,980	7,040	40.00	▲0.57%	470	3,291,340	822.84	612,291
	GTI	4,520	4,520	4,500	4,500	60.00	▲1.35%	168	758,280	189.57	180,000
	PPAP	15,000	15,000	14,980	14,980	40.00	▲0.26%	104	1,559,480	389.87	309,852
	PPSP	2,070	2,070	2,060	2,060	-10.00	▼0.48%	2,070	4,272,210	1,068.05	148,063
	PAS	13,600	13,680	13,600	13,600	0.00	0.00%	157	2,141,600	535.40	1,166,499
	ABC	11,280	0	11,240	11,240	-40.00	▼0.35%	19,895	224,109,980	56,027.50	4,868,752
	PEPC	3,200	3,200	3,140	3,180	0.00	0.00%	262	826,480	206.62	238,325
	Index	497.57	498.71	496.25	496.82	1.37	▲0.27%	71,193	619,079,070	154,770	7,535,121
22/09/21	PPWSA	7,060	7,060	6,980	7,000	0.00	0.00%	1,326	9,282,940	2,320.74	608,812
	GTI	4,500	4,500	4,440	4,440	0.00	0.00%	72	319,740	79.94	177,600
	PPAP	15,000	15,120	14,940	14,940	0.00	0.00%	15,646	212,850,060	53,212.52	309,024
	PPSP	2,060	2,070	2,060	2,070	0.00	0.00%	23,407	48,435,110	12,108.78	148,781
	PAS	13,640	13,640	13,520	13,600	-40.00	▼0.29%	412	5,593,200	1,398.30	1,166,499
	ABC	11,300	11,320	11,280	11,280	-40.00	▼0.35%	30,322	342,572,580	85,643.15	4,886,079
	PEPC	3,180	3,180	3,180	3,180	0.00	0.00%	8	25,440	6.36	238,325
	Index	499.01	499.10	497.43	498.19	0.25	▲0.05%	33,194	343,241,310	85,810	7,588,471
21/09/21	PPWSA	7,000	7,000	7,000	7,000	0.00	0.00%	1,334	9,338,000	2,334.50	608,812
	GTI	4,520	4,520	4,440	4,440	-100.00	▼2.20%	575	2,554,600	638.65	177,600
	PPAP	14,880	14,940	14,880	14,940	140.00	▲0.94%	25	372,600	93.15	309,024
	PPSP	2,060	2,080	2,060	2,070	10.00	▲0.48%	1,889	3,909,730	977.43	148,781
	PAS	13,680	13,680	13,640	14,020	60.00	▲0.44%	15	204,680	51.17	1,202,523
	ABC	11,340	11,340	11,300	11,320	-20.00	▼0.17%	28,699	324,789,660	81,197.42	4,903,405
	PEPC	3,160	3,180	3,140	3,180	0.00	0.00%	657	2,072,040	518.01	238,325
	Index	501.02	501.02	497.75	498.44	1.20	▲0.24%	34,369	325,838,730	81,460	7,559,780
20/09/21	PPWSA	7,040	7,040	6,980	7,000	-40.00	▼0.56%	1,525	10,683,220	2,670.81	608,812
	GTI	4,420	4,540	4,420	4,540	0.00	0.00%	66	298,240	74.56	181,600
	PPAP	14,960	14,960	14,800	14,800	-160.00	▼1.06%	91	1,356,560	339.14	306,129
	PPSP	2,100	2,100	2,050	2,060	10.00	▲0.90%	6,458	13,272,510	3,318.13	148,063
	PAS	13,680	13,680	13,500	13,580	-40.00	▼0.29%	1,699	22,997,160	5,749.29	1,164,783
	ABC	11,400	11,400	11,300	11,340	-20.00	▼0.17%	24,457	276,998,420	69,249.61	4,912,069
	PEPC	3,190	3,190	3,160	3,180	0.00	0.00%	73	232,620	58.16	238,325
	Index	497.61	503.44	497.52	499.64	1.45	▲0.29%	43,530	413,293,840	103,323	7,577,944
17/09/21	PPWSA	7,040	7,060	7,040	7,040	20.00	▲0.28%	122	858,900	214.73	612,291
	GTI	4,460	4,540	4,420	4,540	60.00	▲1.33%	1,082	4,904,880	1,226.22	181,600
	PPAP	14,960	14,980	14,900	14,960	-20.00	▼0.13%	142	2,124,440	531.11	309,438
	PPSP	2,060	2,070	2,040	2,050	-10.00	▼0.48%	7,523	15,378,820	3,844.71	147,344
	PAS	13,600	13,660	13,600	13,620	20.00	▲0.14%	190	2,588,820	647.21	1,168,214
	ABC	11,300	11,500	11,300	11,360	40.00	▲0.35%	33,949	385,798,000	96,449.50	4,920,732
	PEPC	3,200	3,200	3,140	3,180	0.00	0.00%	522	1,639,980	410.00	238,325
	Index	499.67	499.98	497.23	498.19	1.48	▲0.30%	47,764	460,814,070	115,204	7,555,895
16/09/21	PPWSA	7,060	7,060	6,960	7,020	-20.00	▼0.28%	1,539	10,749,760	2,687.44	610,552
	GTI	4,420	4,500	4,420	4,480	-20.00	▼0.44%	3	13,400	3.35	179,200
	PPAP	14,980	14,980	14,980	14,980	0.00	0.00%	17	254,660	63.67	309,852
	PPSP	2,060	2,070	2,040	2,060	0.00	0.00%	7,663	15,702,350	3,925.59	148,063
	PAS	13,620	13,620	13,580	13,600	-40.00	▼0.29%	315	4,283,180	1,070.80	1,166,499
	ABC	11,340	11,380	11,300	11,320	-40.00	▼0.35%	37,886	428,728,720	107,182.18	4,903,405
	PEPC	3,200	3,200	3,140	3,180	10.00	▲0.31%	341	1,082,000	270.50	238,325

	Index	502.56	502.56	497.65	499.67	3.46	▲ 0.69%	55,626	567,731,980	141,933	7,578,443
15/09/21	PPWSA	7,060	7,060	6,960	7,040	20.00	▲ 0.28%	827	5,779,860	1,444.97	612,291
	GTI	4,520	4,520	4,400	4,500	0.00	0.00%	1,282	5,669,480	1,417.37	180,000
	PPAP	15,000	15,000	14,800	14,980	-20.00	▼ 0.13%	117	1,734,160	433.54	309,852
	PPSP	2,080	2,080	2,050	2,060	10.00	▲ 0.48%	3,535	7,252,050	1,813.01	148,063
	PAS	13,600	13,640	13,540	13,640	-20.00	▼ 0.14%	747	10,136,840	2,534.21	1,169,930
	ABC	11,460	11,460	11,320	11,360	-120.00	▼ 1.04%	46,523	529,010,640	132,252.66	4,920,732
	PEPC	3,180	3,190	3,120	3,170	-10.00	▼ 0.31%	2,595	8,148,950	2,037.24	237,576

Source: Data from CSX, and Compiled by ACS

*Exchange Rate: USD1=KHR 4,000

DISCLAIMER

ALL RESEARCH is based on material compiled from data considered to be reliable at the time of writing. However, information and opinions expressed will be subject to change at short notice, and no part of this report is to be construed as an offer or solicitation of an offer to transact any securities or financial instruments whether referred to herein or otherwise. We do not accept any liability directly or indirectly that may arise from investment decision-making based on this report. The company, its directors, officers, employees and/or connected persons may periodically hold an interest in the securities mentioned.

All Rights Reserved. No part of this publication may be used or re-produced without expressed permission from [ACLEDA SECURITIES PLC.](#)

ACLEDA IN GROUP

ACLEDA BANK PLC.

HEADQUARTERS

61, Preah Monivong Blvd., Sangkat Srah Chork,
Khan Daun Penh, Phnom Penh, Kingdom of Cambodia.
P.O. Box: 1149
Tel: (855) 23 998 777 / 430 999
Fax: (855) 23 998 666 / 430 555
E-mail: acledabank@acledabank.com.kh
Website: www.acledabank.com.kh
SWIFT: ACLBKHPP

ACLEDA BANK PLC.

CASH SETTLEMENT, SECURITIES REGISTRAR, SECURITIES TRANSFER, AND
PAYING AGENT

HEADQUARTERS

61, Preah Monivong Blvd., Sangkat Srah Chork,
Khan Daun Penh, Phnom Penh, Kingdom of Cambodia.
P.O. Box: 1149
Tel: (855) 23 998 777 / 430 999
Fax: (855) 23 998 666 / 430 555
E-mail: acledabank@acledabank.com.kh
Website: www.acledabank.com.kh
SWIFT: ACLBKHPP

ACLEDA BANK LAO LTD.

HEADQUARTERS

#398, Corner of Dongpalane and Dongpaina Road, Unit 20,
Phonesavanh
Neua Village, Sisattanak District, Vientiane Capital, Lao PDR.
P.O. Box: 1555
Hotline :1800
Tel: +856 (0)21 264 994 / 264 998
Fax: +856 (0)21 264 995 / 219 228
E-mail: acledabank@acledabank.com.la
Website: www.acledabank.com.la
SWIFT: ACLBLALA

ACLEDA SECURITIES PLC.

HEADQUARTERS

5th Floor, ACLEDA Building
61, Preah Monivong Blvd., Sangkat Srah Chork,
Khan Daun Penh, Phnom Penh, Kingdom of Cambodia.
Tel: (855) 23 723 388 / 999 966 / 999 977
Email: acs.rep@acledasecurities.com.kh
Website: www.acledasecurities.com.kh

ACLEDA INSTITUTE OF BUSINESS

HEADQUARTERS

Address: #1397, Phnom Penh-Hanoi
Friendship Blvd., Phum Anlong Kngan, Sangkat Khmuonh, Khan
Saensokh, Phnom Penh, Kingdom of Cambodia
P. O. Box: 1149
Tel: + 855 (0)23 881 790 / 999 944
E-mail: info@acleda-aib.edu.kh
Website: www.acleda-aib.edu.kh

ACLEDA MFI MYANMAR CO., LTD.

HEADQUARTERS

#186(B), ShweGonTaing Road, Yae Tar Shae Block,
Bahan Township, Yangon Region,
The Republic of the Union of Myanmar.
Tel: (+95-1) 559 475 / 552 956
Website: www.acledamfi.com.mm