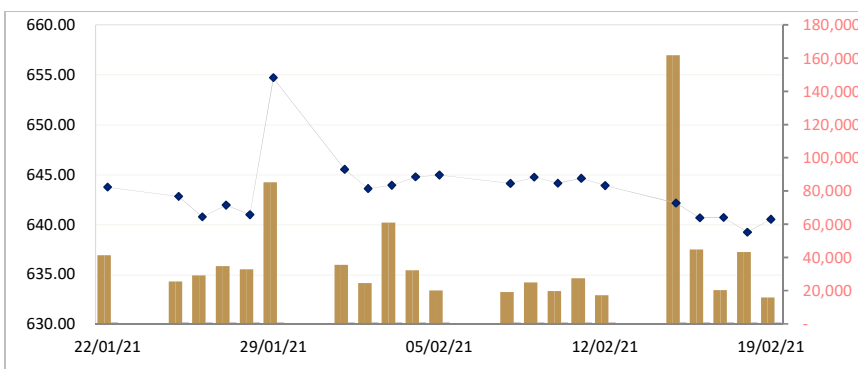


CAMBODIA SECURITIES EXCHANGE: MARKET SUMMARY

| Index / Companies | Previous Day | Open | Closing | Change | % Change | From Listed till Today | | Volume | Value (KHR) |
|-------------------|--------------|--------|---------|--------|----------|------------------------|--------|--------|-------------|
| | | | | | | High | Low | | |
| Index | 639.21 | 639.36 | 640.49 | 1.28 | ▲0.20 | 1,108 | 305 | 15,909 | 131,778,300 |
| PPWSA | 6,060 | 6,060 | 6,060 | 0 | 0.00 | 6,500 | -4 | 140 | 848,400 |
| GTI | 3,220 | 3,300 | 3,300 | 80. | ▲2.48 | 9,780 | 2,110 | 10 | 33,000 |
| PPAP | 11,980 | 12,000 | 11,960 | -20. | ▼0.17 | 13,380 | 4,600 | 31 | 371,400 |
| PPSP | 1,540 | 1,530 | 1,540 | 0 | 0.00 | 3,650 | 1,120 | 8,094 | 12,457,980 |
| PAS | 13,480 | 13,480 | 13,480 | 0 | 0.00 | 23,800 | 4,620 | 2,982 | 24,862,020 |
| ABC | 16,860 | 16,880 | 16,900 | 40. | ▲0.24 | 23,600 | 16,180 | 4,617 | 77,961,520 |
| PEPC | 2,950 | 2,860 | 2,940 | -10. | ▼0.34 | 3,990 | 2,710 | 35 | 24,862,020 |

CSX DAILY STOCK INDEX (Last 30 Days)



SECURITIES NEWS

CAMBODIA : Two listed firms post sound 2020 business

Two companies listed on the Cambodia Securities Exchange (CSX) reported sound business performance last year despite economic duress caused by the Covid-19 pandemic's enduring stranglehold on regional and global economies. In its filing to CSX last week, ACLEDA Bank Plc (ABC) reported strong growth with total revenue of more than \$141.66 million in the fourth quarter of last year, or a sharp 17.17% increase compared to \$120.894 million in the same period a year earlier. "The increase was mainly due to an increase in net interest revenue of 16.37%, equivalent to 55.350 million riel [\$13,630] compared to the fourth quarter of 2019," said the bank. And state-owned Sihanoukville Autonomous Port (PAS) reported a strong 15.6% year-on-year rise in net revenue in the fourth quarter to \$2.718 million, from \$2.349 million. However, the deep-sea port operator posted a 7.59% year-on-year dip in sales revenue. "The decrease in revenue and the increase in operating and net profit were due to the result of the declines in general cargo throughput and fuel, and the increase of unrealised foreign exchange loss [in Japanese yen] compared to the fourth quarter of 2019. (Phnom Penh Post)

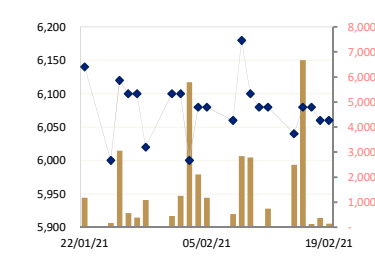
CAMBODIA : PPAP releases solid Q4 report despite downturn fuelled by Coronavirus

Phnom Penh Autonomous Port (PPAP) registered a pre-tax profit of \$2.85 million last quarter, a 25% decrease over the same period in 2019, according to its quarterly report. Previous filings reported that PPAP's revenue decreased by 2% in Dec, an upwards trend away from the firm's overall revenue decline of 11% during Q42020. The company's total pre-tax profit for the fiscal year was over \$12.5 million, while the firm held more than \$26.65 million in reserves as of Jan 1. Earnings per share have dropped some 23% to 468 riels (\$0.11) since 2019. Shares of the firm rose by 100 riels (\$0.02) after the report was released on Tuesday, ending its session at 12,000 riels per share (\$3). The bulk of PPAP's revenue (86.78%) was derived from port operations. Some 12.73% of its revenue was generated from its role as the port authority. Stevedoring, the loading and off-loading of cargo from ships, accounted for 44% of the firm's revenue in port operations. Lift-on-lift-off, the use of cranes to move cargo, garnered 37.5% of

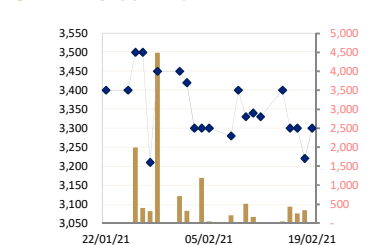
LISTED COMPANIES

| | |
|----------|-----------------------------------|
| PPWSA | Phnom Penh Water Supply Authority |
| Industry | Water Utility |
| GTI | Grant Twins Int. (Cambodia) Plc. |
| Industry | Apparel Clothing |
| PPAP | Phnom Penh Autonomous Port. |
| Industry | Port Services |
| PPSP | Phnom Penh SEZ PLC. |
| Industry | SEZ Developer |
| PAS | Sihanouk Ville Autonomous Port. |
| Industry | Port Services |
| ABC | ACLEDA Bank |
| Industry | Financial |
| PEPC | PESTECH Cambodia |
| Industry | Electricity |

PPWSA DAILY STOCK PRICE



GTI DAILY STOCK PRICE



its revenue, with port dues and charges bringing in 12.73%, a breakdown of the data revealed. *(Khmer Times)*

CAMBODIA : MARKET WATCH

Yesterday's CSX index movement was limited yesterday to "hold steady" or "drop slightly" status. The index itself moved downwards 1.47 points, to land at 639.21 on a trading value of 172,469,000 riels. PPAP was among the day's four "non-movers", finishing the day at 11,980 riels per share. PPSP closed unchanged at 1,540. PAS rested at 13,489 and PEPC held steady at 2,950. GTI was the largest mover of the day, closing down 80 riels to 3,220 riels per share. ABC was off 40 riels for the day to end up at 16,860 riels per share. PWSA nudged down 20 riels to land at 6,060 riels per share. *(Khmer Times)*

BUSINESS & ECONOMIC NEWS

CAMBODIA : NBC governor thanks IMF for development support

The International Monetary Fund (IMF) and Cambodia have met virtually to discuss and evaluate the Kingdom's macro-economic situation during the ongoing COVID-19 pandemic. The meeting took place via video conference between Governor of the National Bank of Cambodia (NBC) Chea Chanto and head of the IMF Team for Cambodia Alasdair Scott, this week. During the meeting, Chanto informed the IMF team about government efforts in preventing the spread of COVID-19 and in stabilising the country's economy since the breakout of the virus. He said to support economic activities, the NBC had also improved its currency policy, by easing various regulations in order to increase cash injections into the banking system as well as encouraging loan restructuring to help clients facing financial hardships. The governor also extended his thanks to the IMF for its contribution to Cambodia's development, especially in the banking sector. Speaking for the IMF, Alasdair Scott shared a glowing appreciation for Cambodia's banking policy amid the pandemic and its key role in helping to stabilise the micro-economy during the crisis. He also pledged that the IMF will continue cooperating with the NBC, especially in the areas of financial security, currency policy and development towards a fully integrated banking data system. *(Khmer Times)*

CAMBODIA : NBC to keep lower RRR until June 30

Financial industry players were on cloud nine after the National Bank of Cambodia (NBC) announced it would keep the current seven per cent reserve requirement ratio (RRR) until June 30 to ensure liquidity in the sector to fund more loans and to crank up economic activity. RRRs are central bank regulations that set a minimum amount of cash that financial institutions must hold in reserve. The Cambodian RRR in foreign and domestic currency were 12.5% and 8%, respectively, until the NBC reduced both to 7% in March last year. The decision came after a February 10 meeting of the NBC's Monetary Policy Committee chaired by central bank governor Chea Chanto – that reviewed global economic updates, Cambodian macro-economic and financial sector progress and challenges, as well as future monetary policy actions. *(Phnom Penh Post)*

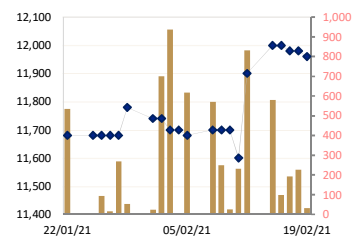
CAMBODIA : Tax revenues exceed target pace

The Ministry of Economy and Finance's General Department of Taxation (GDT) collected 879.68 billion riel (\$217.2 million) in tax revenue last month, down 77.08 billion riel or 8.06% compared to 2020, it said in a February 15 press release. This comes even as tax collection from the three main sources of revenue "income", "payroll" and "special" enjoyed year-on-year gains, with economists quick to peg the decline on government policies granting preferential treatment for sectors that face severe ongoing distress from the Covid-19 crisis. Still, last month's figure accounts for 9.68% of the 9.08442 trillion riels annual target well over one-twelfth, GDT said. Broken down by category, income tax made up the largest share of revenue last month, raking in 173.79 billion riels (up 7.26% year-on-year), followed by payroll tax (91.31 billion riels, up 10.07%) and special tax (77.10 billion riels, up 5.53%). GDT director-general Kong Vibol told online media outlet Fresh News that January's tax revenue numbers had not decreased month-on-month and that this year's collection level is poised to be slightly higher than in 2020. "The decline in tax revenue over the first month was due to the [new] Covid-19 cases as well as the overall economic situation," he said. *(Phnom Penh Post)*

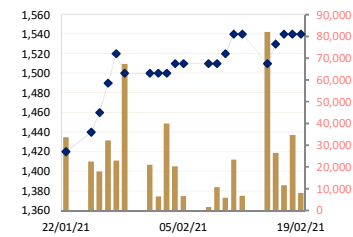
CAMBODIA : CDC okays 144 Japan projects worth \$2.79B since '94 debut

The Council for the Development of Cambodia (CDC) has approved a cumulative 144 Japanese investment projects worth \$2.79 billion since its inception in 1994, 66 of which are in special economic zones (SEZ) with \$340 million in capital investment, it said in a press release. The release was issued following the 21st Public-Private Sector Meeting of the Cambodia-Japan

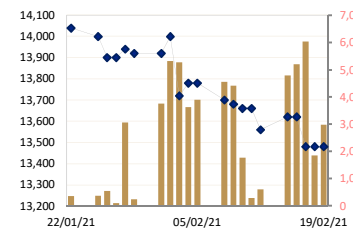
PPAP DAILY STOCK PRICE



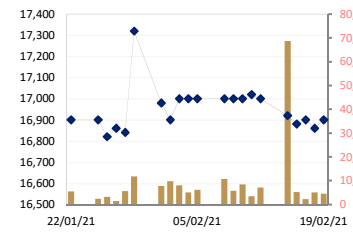
PPSP DAILY STOCK PRICE



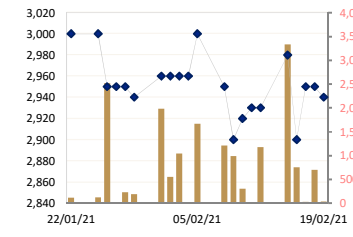
PAS DAILY STOCK PRICE



ABC DAILY STOCK PRICE



PEPC DAILY STOCK PRICE



Joint Committee held at the CDC on February 11 evening. CDC secretary-general Sok Chenda Sophea said Japanese investors play an important role in contributing to Cambodia's economic growth, even as the world grapples with the Covid-19 pandemic. "Their continued investment in Cambodia is a testament to the commitment of Japanese investor, which builds up strong confidence in the Royal Government of Cambodia," he said. Japanese ambassador to Cambodia Masahiro Mikami praised the government's policy and efforts across the relevant institutions in addressing the challenges posed by the Covid-19 crisis and maintaining Cambodia's competitiveness in international trade at this time. Hong Vanak, director of International Economics at the Royal Academy of Cambodia, told The Post on February 14 that Japanese investment is renowned for its clarity and robustness and that the island nation's foreign direct investment (FDI) inflows into the Kingdom rank second after China. (*Phnom Penh Post*)

CAMBODIA : Cambodia's rubber export reach \$85 million in January

Cambodia exported some 52,711 tonnes of rubber in January, generating around \$85 million for the national income. The update was shared yesterday by the Ministry of Agriculture, Forestry and Fisheries, adding that during the first month of this year, a tonne of rubber cost \$1,603 on average, a year-on-year increase of 17%. Cambodia has in total 404,159 hectares of land surface for rubber plantations, producing 57,972 tonnes of rubber latex, up 17 percent compared to January 2020, continued the source. Some 340,000 tonnes of Cambodian rubber were exported in 2020 generating \$459 million as income. The Kingdom exports rubber mainly to Malaysia, Vietnam, Singapore and China. (*Khmer Times*)

THAILAND : Thailand economy shrinks most since 1997

Thailand's economy suffered its worst full-year performance in more than two decades, data showed on February 15, with officials citing the toll of a gutted tourism industry and ongoing political upheaval. Last year's 6.1% contraction was the worst since a 7.6% decline during the Asian financial crisis in 1997 and officials downgraded their 2021 growth forecast to 2.5-3.5 from a previous estimate of 3.5-4.5% despite a slight improvement in the fourth quarter. "It has rebounded from the previous quarter due to the government's stimulus package that boosted spending," Office of the National Economic and Social Development Council (NESDC) secretary-general Danucha Pichayanan said. Although the kingdom was largely spared the worst of the virus, pandemic-spurred partial lockdowns have hit the economy hard. Thailand has logged over 24,500 Covid cases, with a jump of about 20,000 infections since late last year, after a second wave that stemmed from the country's largest seafood market. Some 40 million tourists had been expected to arrive in 2020, but as international travel ground to a trickle, their absence hammered the country's services sector, bruising entertainment, retail, hotels and restaurants. (*AFP*)

VIETNAMESE : Central Vietnamese city set to build international duty-free zone

Danang authorities are building a detailed plan for the Vietnamese city's first international duty-free zone and smart urban area for investors, with construction set to commence soon after the Import-Export Pan Pacific Group (IPPG) asked the city to allocate land for the project. Huynh Thi Lien Phuong, director of the city's Investment Promotion Agency, told Viet Nam News that the project had been finalising the city's first international standard downtown duty-free zone and factory outlet centre. Lien said the city would offer the best conditions for the investor to start the project. She said the city also planned a downtown free-duty shop at the coastal crown plaza in Ngu Hanh Son district to seek investment. In 2019, IPPG proposed the project with an investment of \$434 million, but an appropriate land area was yet to be offered. In 2018, group chairman Jonathan Hạnh Nguyen urged the city to build a third terminal to ease congestion and design an international standard duty-free zone and recreational area to funnel tourism towards Hoi An, Hue and Danang. He said Danang would be a new location for a luxury shopping centre for future development and investment attraction. (*Asia News Network*)

Historical Trading Data (Latest Month)

| Date | Index/Stock | Open | High | Low | Close | Change | Δ (%) | Volume | Value (mil. KHR) | Value (\$)* | Mar. Cap. (mil. KHR) |
|----------|-------------|--------|--------|--------|--------|---------|--------|-----------|------------------|-------------|----------------------|
| 19/02/21 | Index | 639.36 | 640.69 | 639.07 | 640.49 | 1.28 | ▲0.20% | 15,909 | 131,778,300 | 32,945 | 9,714,129 |
| | PPWSA | 6,060 | 6,060 | 6,060 | 6,060 | 0.00 | 0.00% | 140 | 848,400 | 212.10 | 527,057 |
| | GTI | 3,300 | 3,300 | 3,300 | 3,300 | 80.00 | ▲2.48% | 10 | 33,000 | 8.25 | 132,000 |
| | PPAP | 12,000 | 12,000 | 11,960 | 11,960 | -20.00 | ▼0.16% | 31 | 371,400 | 92.85 | 247,385 |
| | PPSP | 1,530 | 1,550 | 1,530 | 1,540 | 0.00 | 0.00% | 8,094 | 12,457,980 | 3,114.50 | 110,688 |
| | PAS | 13,480 | 13,500 | 13,400 | 13,480 | 0.00 | 0.00% | 2,982 | 40,003,180 | 10,000.80 | 1,156,206 |
| | ABC | 16,880 | 16,900 | 16,860 | 16,900 | 40.00 | ▲0.23% | 4,617 | 77,961,520 | 19,490.38 | 7,320,455 |
| PEPC | 2,860 | 2,980 | 2,860 | 2,940 | -10.00 | ▼0.33% | 35 | 102,820 | 25.71 | 220,338 | |
| 18/02/21 | Index | 640.70 | 643.30 | 638.64 | 639.21 | 1.47 | ▲0.23% | 43,275 | 172,469,000 | 43,117 | 9,694,766 |
| | PPWSA | 6,080 | 6,080 | 6,060 | 6,060 | -20.00 | ▼0.32% | 370 | 2,248,720 | 562.18 | 527,057 |
| | GTI | 3,300 | 3,300 | 3,220 | 3,220 | -80.00 | ▼2.42% | 335 | 1,081,500 | 270.38 | 128,800 |
| | PPAP | 12,000 | 12,000 | 11,960 | 11,980 | 0.00 | 0.00% | 226 | 2,703,680 | 675.92 | 247,799 |
| | PPSP | 1,540 | 1,560 | 1,540 | 1,540 | 0.00 | 0.00% | 34,717 | 53,804,540 | 13,451.14 | 110,688 |
| | PAS | 13,500 | 13,520 | 13,480 | 13,480 | 0.00 | 0.00% | 1,842 | 24,862,020 | 6,215.51 | 1,156,206 |
| | ABC | 16,980 | 16,980 | 16,840 | 16,860 | -40.00 | ▼0.23% | 5,083 | 85,693,800 | 21,423.45 | 7,303,129 |
| PEPC | 2,950 | 2,980 | 2,950 | 2,950 | 0.00 | 0.00% | 702 | 2,074,740 | 518.69 | 221,088 | |
| 17/02/21 | Index | 641.03 | 644.30 | 639.77 | 640.68 | 0.05 | ▲0.01% | 20,398 | 139,722,970 | 34,931 | 9,717,032 |
| | PPWSA | 6,100 | 6,100 | 6,080 | 6,080 | 0.00 | 0.00% | 132 | 803,200 | 200.80 | 528,797 |
| | GTI | 3,180 | 3,300 | 3,180 | 3,300 | 0.00 | 0.00% | 255 | 811,500 | 202.88 | 132,000 |
| | PPAP | 11,960 | 11,980 | 11,960 | 11,980 | -20.00 | ▼0.16% | 191 | 2,284,680 | 571.17 | 247,799 |
| | PPSP | 1,530 | 1,540 | 1,530 | 1,540 | 10.00 | ▲0.65% | 11,591 | 17,814,810 | 4,453.70 | 110,688 |
| | PAS | 13,700 | 13,700 | 13,420 | 13,480 | -140.00 | ▼1.02% | 6,039 | 81,429,980 | 20,357.50 | 1,156,206 |
| | ABC | 16,880 | 17,000 | 16,880 | 16,900 | 20.00 | ▲0.11% | 2,160 | 36,490,300 | 9,122.58 | 7,320,455 |
| PEPC | 2,950 | 2,950 | 2,950 | 2,950 | 50.00 | ▲1.72% | 30 | 88,500 | 22.13 | 221,088 | |
| 16/02/21 | Index | 641.43 | 641.43 | 633.61 | 640.63 | 1.48 | ▲0.23% | 44,769 | 242,120,480 | 60,530 | 9,716,324 |
| | PPWSA | 6,040 | 6,080 | 5,900 | 6,080 | 40.00 | ▲0.66% | 6,670 | 39,472,680 | 9,868.17 | 528,797 |
| | GTI | 3,300 | 3,300 | 3,180 | 3,300 | -100.00 | ▼2.94% | 432 | 1,377,080 | 344.27 | 132,000 |
| | PPAP | 12,000 | 12,000 | 11,800 | 12,000 | 0.00 | 0.00% | 98 | 1,172,240 | 293.06 | 248,212 |
| | PPSP | 1,510 | 1,530 | 1,510 | 1,530 | 20.00 | ▲1.32% | 26,403 | 40,221,960 | 10,055.49 | 109,969 |
| | PAS | 13,500 | 13,620 | 13,400 | 13,620 | 0.00 | 0.00% | 5,211 | 70,317,880 | 17,579.47 | 1,168,214 |
| | ABC | 16,820 | 16,920 | 16,700 | 16,880 | -40.00 | ▼0.23% | 5,197 | 87,348,920 | 21,837.23 | 7,311,792 |
| PEPC | 2,940 | 2,950 | 2,900 | 2,900 | -80.00 | ▼2.68% | 758 | 2,209,720 | 552.43 | 217,341 | |
| 15/02/21 | Index | 646.10 | 646.30 | 640.11 | 642.11 | 1.75 | ▲0.27% | 161,905 | 1,387,467,620 | 346,867 | 9,738,730 |
| | PPWSA | 6,100 | 6,100 | 6,000 | 6,040 | -40.00 | ▼0.65% | 2,493 | 15,101,740 | 3,775.44 | 525,318 |
| | GTI | 3,330 | 3,400 | 3,330 | 3,400 | 70.00 | ▲2.10% | 44 | 148,760 | 37.19 | 136,000 |
| | PPAP | 12,000 | 12,000 | 11,620 | 12,000 | 100.00 | ▲0.84% | 581 | 6,826,960 | 1,706.74 | 248,212 |
| | PPSP | 1,560 | 1,560 | 1,490 | 1,510 | -30.00 | ▼1.94% | 81,977 | 123,712,190 | 30,928.05 | 108,531 |
| | PAS | 13,700 | 13,700 | 13,480 | 13,620 | 60.00 | ▲0.44% | 4,781 | 64,592,260 | 16,148.07 | 1,168,214 |
| | ABC | 17,000 | 17,040 | 16,900 | 16,920 | -80.00 | ▼0.47% | 68,692 | 1,167,374,120 | 291,843.53 | 7,329,118 |
| PEPC | 3,000 | 3,000 | 2,900 | 2,980 | 50.00 | ▲1.70% | 3,337 | 9,711,590 | 2,427.90 | 223,336 | |
| 12/02/21 | Index | 644.56 | 646.78 | 643.86 | 643.86 | 0.75 | ▲0.12% | 17,352 | 158,234,750 | 39,559 | 9,765,256 |
| | PPWSA | 6,080 | 6,080 | 6,080 | 6,080 | 0.00 | 0.00% | 740 | 4,499,200 | 1,124.80 | 528,797 |
| | GTI | 3,330 | 3,330 | 3,330 | 3,330 | -10.00 | ▼0.29% | 32 | 106,560 | 26.64 | 133,200 |
| | PPAP | 12,200 | 12,200 | 11,600 | 11,900 | 300.00 | ▲2.58% | 832 | 9,965,500 | 2,491.38 | 246,144 |
| | PPSP | 1,530 | 1,550 | 1,530 | 1,540 | 0.00 | 0.00% | 6,827 | 10,495,450 | 2,623.86 | 110,688 |
| | PAS | 13,660 | 13,700 | 13,560 | 13,560 | -100.00 | ▼0.73% | 611 | 8,353,200 | 2,088.30 | 1,163,068 |
| | ABC | 17,020 | 17,080 | 17,000 | 17,000 | -20.00 | ▼0.11% | 7,130 | 121,343,640 | 30,335.91 | 7,363,771 |
| PEPC | 2,940 | 2,950 | 2,930 | 2,930 | 0.00 | 0.00% | 1,180 | 3,471,200 | 867.80 | 219,589 | |
| 11/02/21 | Index | 644.12 | 645.98 | 644.10 | 644.61 | 0.49 | ▲0.08% | 27,525 | 101,826,940 | 25,457 | 9,776,691 |
| | PPWSA | 6,080 | 6,080 | 6,080 | 6,080 | -20.00 | ▼0.32% | 10 | 60,800 | 15.20 | 528,797 |
| | GTI | 3,200 | 3,340 | 3,200 | 3,340 | 10.00 | ▲0.30% | 161 | 523,140 | 130.79 | 133,600 |
| | PPAP | 11,600 | 11,600 | 11,600 | 11,600 | -100.00 | ▼0.85% | 231 | 2,679,600 | 669.90 | 239,939 |
| | PPSP | 1,520 | 1,550 | 1,510 | 1,540 | 20.00 | ▲1.31% | 23,374 | 35,701,740 | 8,925.44 | 110,688 |
| | PAS | 13,660 | 13,660 | 13,660 | 13,660 | 0.00 | 0.00% | 282 | 3,852,120 | 963.03 | 1,171,645 |
| | ABC | 17,060 | 17,060 | 17,020 | 17,020 | 20.00 | ▲0.11% | 3,467 | 59,009,540 | 14,752.39 | 7,372,435 |
| PEPC | 2,930 | 2,930 | 2,930 | 2,930 | 10.00 | ▲0.34% | 0 | 0 | 0.00 | 219,589 | |
| 10/02/21 | Index | 644.73 | 646.11 | 644.06 | 644.12 | 0.61 | ▲0.09% | 19,590 | 194,305,230 | 48,576 | 9,769,249 |
| | PPWSA | 6,100 | 6,100 | 6,000 | 6,100 | -80.00 | ▼1.29% | 2,785 | 16,767,700 | 4,191.93 | 530,536 |
| | GTI | 3,270 | 3,330 | 3,200 | 3,330 | -70.00 | ▼2.05% | 508 | 1,630,610 | 407.65 | 133,200 |
| | PPAP | 11,800 | 11,800 | 11,700 | 11,700 | 0.00 | 0.00% | 25 | 293,700 | 73.43 | 242,007 |
| | PPSP | 1,510 | 1,520 | 1,510 | 1,520 | 10.00 | ▲0.66% | 5,860 | 8,848,620 | 2,212.16 | 109,250 |
| | PAS | 13,700 | 13,700 | 13,500 | 13,660 | -20.00 | ▼0.14% | 1,762 | 23,906,100 | 5,976.53 | 1,171,645 |
| | ABC | 17,000 | 0 | 17,000 | 17,000 | 0.00 | 0.00% | 8,350 | 141,982,500 | 35,495.63 | 7,363,771 |
| PEPC | 2,920 | 2,920 | 2,920 | 2,920 | 20.00 | ▲0.68% | 300 | 876,000 | 219.00 | 218,839 | |
| 09/02/21 | Index | 644.09 | 645.91 | 642.70 | 644.73 | 0.64 | ▲0.10% | 24,869 | 196,188,800 | 49,047 | 9,778,505 |
| | PPWSA | 6,080 | 6,280 | 6,000 | 6,180 | 120.00 | ▲1.98% | 2,832 | 17,273,760 | 4,318.44 | 537,494 |
| | GTI | 3,400 | 3,400 | 3,400 | 3,400 | 120.00 | ▲3.65% | 19 | 64,600 | 16.15 | 136,000 |
| | PPAP | 11,700 | 11,700 | 11,680 | 11,700 | 0.00 | 0.00% | 250 | 2,923,000 | 730.75 | 242,007 |
| | PPSP | 1,510 | 1,510 | 1,500 | 1,510 | 0.00 | 0.00% | 10,666 | 16,103,660 | 4,025.92 | 108,531 |

The securities foragorion trust

See important disclosures at the end of this report

| | | | | | | | | | | | |
|----------|-------|--------|--------|--------|--------|---------|--------|-----------|-------------|-----------|-----------|
| 08/02/21 | PAS | 13,700 | 13,700 | 13,520 | 13,680 | -20.00 | ▼0.14% | 4,413 | 60,021,820 | 15,005.46 | 1,173,361 |
| | ABC | 17,000 | 17,060 | 17,000 | 17,000 | 0.00 | 0.00% | 5,700 | 96,929,860 | 24,232.47 | 7,363,771 |
| | PEPC | 2,900 | 2,950 | 2,900 | 2,900 | -50.00 | ▼1.69% | 989 | 2,872,100 | 718.03 | 217,341 |
| | Index | 644.93 | 650.64 | 642.70 | 644.09 | 0.84 | ▲0.13% | 19,165 | 258,480,170 | 64,620 | 9,784,170 |
| | PPWSA | 6,080 | 6,080 | 6,000 | 6,060 | -20.00 | ▼0.32% | 533 | 3,213,480 | 803.37 | 527,057 |
| | GTI | 3,280 | 3,280 | 3,280 | 3,280 | -20.00 | ▼0.60% | 200 | 656,000 | 164.00 | 131,200 |
| | PPAP | 11,500 | 11,700 | 11,500 | 11,700 | 20.00 | ▲0.17% | 570 | 6,575,000 | 1,643.75 | 242,007 |
| | PPSP | 1,520 | 1,520 | 1,500 | 1,510 | 0.00 | 0.00% | 1,480 | 2,238,050 | 559.51 | 108,531 |
| | PAS | 13,500 | 13,760 | 13,500 | 13,880 | -80.00 | ▼0.58% | 4,557 | 61,702,940 | 15,425.74 | 1,190,515 |
| 05/02/21 | ABC | 17,000 | 17,200 | 17,000 | 17,000 | 0.00 | 0.00% | 10,612 | 180,586,820 | 45,146.71 | 7,363,771 |
| | PEPC | 2,880 | 2,960 | 2,820 | 2,950 | -50.00 | ▼1.66% | 1,213 | 3,507,880 | 876.97 | 221,088 |
| | Index | 645.44 | 645.97 | 643.42 | 644.93 | 0.17 | ▲0.03% | 20,190 | 186,020,560 | 46,505 | 9,781,465 |
| | PPWSA | 6,100 | 6,100 | 6,080 | 6,080 | 0.00 | 0.00% | 1,179 | 7,168,340 | 1,792.09 | 528,797 |
| | GTI | 3,300 | 3,300 | 3,300 | 3,300 | 0.00 | 0.00% | 45 | 148,500 | 37.13 | 132,000 |
| | PPAP | 11,800 | 11,800 | 11,680 | 11,680 | -20.00 | ▼0.17% | 617 | 7,207,040 | 1,801.76 | 241,593 |
| | PPSP | 1,520 | 1,520 | 1,510 | 1,510 | 0.00 | 0.00% | 6,697 | 10,140,080 | 2,535.02 | 108,531 |
| | PAS | 13,840 | 13,860 | 13,500 | 13,780 | 0.00 | 0.00% | 3,899 | 52,945,060 | 13,236.27 | 1,181,938 |
| | ABC | 17,000 | 17,040 | 17,000 | 17,000 | 0.00 | 0.00% | 6,084 | 103,532,720 | 25,883.18 | 7,363,771 |
| PEPC | 2,970 | 3,000 | 2,860 | 3,000 | 40.00 | ▲1.35% | 1,669 | 4,878,820 | 1,219.71 | 224,835 | |
| 04/02/21 | Index | 645.10 | 647.01 | 643.24 | 644.76 | 0.85 | ▲0.13% | 32,347 | 183,524,880 | 45,881 | 9,778,881 |
| | PPWSA | 6,000 | 6,080 | 6,000 | 6,080 | 80.00 | ▲1.33% | 2,117 | 12,709,780 | 3,177.45 | 528,797 |
| | GTI | 3,300 | 3,300 | 3,200 | 3,300 | 0.00 | 0.00% | 1,197 | 3,880,750 | 970.19 | 132,000 |
| | PPAP | 11,700 | 11,700 | 11,700 | 11,700 | 0.00 | 0.00% | 2 | 23,400 | 5.85 | 242,007 |
| | PPSP | 1,510 | 1,510 | 1,500 | 1,510 | 10.00 | ▲0.66% | 20,288 | 30,609,130 | 7,652.28 | 108,531 |
| | PAS | 13,720 | 13,780 | 13,500 | 13,780 | 60.00 | ▲0.43% | 3,621 | 49,081,920 | 12,270.48 | 1,181,938 |
| | ABC | 17,040 | 17,080 | 17,000 | 17,000 | 0.00 | 0.00% | 5,122 | 87,219,900 | 21,804.98 | 7,363,771 |
| | PEPC | 2,960 | 2,960 | 2,960 | 2,960 | 0.00 | 0.00% | 0 | 0 | 0.00 | 221,837 |
| | Index | 640.75 | 646.85 | 636.95 | 643.91 | 0.33 | ▲0.05% | 60,942 | 315,284,680 | 78,821 | 9,766,058 |
| 03/02/21 | PPWSA | 6,100 | 6,100 | 6,000 | 6,000 | -100.00 | ▼1.63% | 5,792 | 34,933,040 | 8,733.26 | 521,839 |
| | GTI | 3,300 | 3,300 | 3,300 | 3,300 | -120.00 | ▼3.50% | 16 | 52,800 | 13.20 | 132,000 |
| | PPAP | 11,600 | 11,700 | 11,600 | 11,700 | -40.00 | ▼0.34% | 937 | 10,922,900 | 2,730.73 | 242,007 |
| | PPSP | 1,500 | 1,510 | 1,460 | 1,500 | 0.00 | 0.00% | 39,936 | 59,436,500 | 14,859.13 | 107,813 |
| | PAS | 13,500 | 13,920 | 13,500 | 13,720 | -280.00 | ▼2.00% | 5,272 | 71,812,480 | 17,953.12 | 1,176,791 |
| | ABC | 16,900 | 17,060 | 16,700 | 17,000 | 100.00 | ▲0.59% | 7,949 | 135,088,840 | 33,772.21 | 7,363,771 |
| | PEPC | 2,920 | 2,960 | 2,920 | 2,960 | 0.00 | 0.00% | 1,040 | 3,038,120 | 759.53 | 221,837 |
| | Index | 646.44 | 646.44 | 637.99 | 643.58 | 1.91 | ▲0.30% | 24,508 | 265,969,060 | 66,492 | 9,761,083 |
| | PPWSA | 6,100 | 6,100 | 6,000 | 6,100 | 0.00 | 0.00% | 1,255 | 7,612,400 | 1,903.10 | 530,536 |
| 02/02/21 | GTI | 3,480 | 3,480 | 3,200 | 3,420 | -30.00 | ▼0.86% | 321 | 1,038,040 | 259.51 | 136,800 |
| | PPAP | 11,800 | 11,800 | 11,740 | 11,740 | 0.00 | 0.00% | 700 | 8,242,000 | 2,060.50 | 242,834 |
| | PPSP | 1,500 | 1,510 | 1,490 | 1,500 | 0.00 | 0.00% | 6,528 | 9,789,450 | 2,447.36 | 107,813 |
| | PAS | 13,900 | 14,000 | 13,500 | 14,000 | 80.00 | ▲0.57% | 5,320 | 72,536,660 | 18,134.17 | 1,200,808 |
| | ABC | 17,000 | 17,000 | 16,660 | 16,900 | -80.00 | ▼0.47% | 9,829 | 165,099,560 | 41,274.89 | 7,320,455 |
| | PEPC | 3,020 | 3,020 | 2,960 | 2,960 | 0.00 | 0.00% | 555 | 1,650,950 | 412.74 | 221,837 |
| | Index | 654.75 | 655.41 | 638.30 | 645.49 | 9.21 | ▲1.41% | 35,671 | 225,430,900 | 56,358 | 9,790,074 |
| | PPWSA | 6,100 | 6,100 | 6,020 | 6,100 | 80.00 | ▲1.32% | 450 | 2,744,200 | 686.05 | 530,536 |
| | GTI | 3,400 | 3,450 | 3,200 | 3,450 | 0.00 | 0.00% | 712 | 2,349,790 | 587.45 | 138,000 |
| 01/02/21 | PPAP | 11,760 | 11,760 | 11,740 | 11,740 | -40.00 | ▼0.33% | 23 | 270,200 | 67.55 | 242,834 |
| | PPSP | 1,520 | 1,520 | 1,470 | 1,500 | 0.00 | 0.00% | 21,054 | 31,406,270 | 7,851.57 | 107,813 |
| | PAS | 13,940 | 13,940 | 13,700 | 13,920 | 0.00 | 0.00% | 3,754 | 51,722,160 | 12,930.54 | 1,193,946 |
| | ABC | 17,320 | 17,320 | 16,800 | 16,980 | -340.00 | ▼1.96% | 7,694 | 131,111,660 | 32,777.92 | 7,355,108 |
| | PEPC | 2,980 | 2,980 | 2,920 | 2,960 | 20.00 | ▲0.68% | 1,984 | 5,826,620 | 1,456.66 | 221,837 |
| | Index | 641.60 | 654.70 | 638.58 | 654.70 | 13.76 | ▲2.15% | 85,243 | 327,705,230 | 81,926 | 9,929,720 |
| | PPWSA | 6,180 | 6,180 | 6,020 | 6,020 | -80.00 | ▼1.31% | 1,081 | 6,541,780 | 1,635.45 | 523,578 |
| | GTI | 3,200 | 3,450 | 3,200 | 3,450 | 240.00 | ▲7.47% | 4,490 | 14,391,110 | 3,597.78 | 138,000 |
| | PPAP | 11,780 | 11,780 | 11,600 | 11,780 | 100.00 | ▲0.85% | 53 | 620,920 | 155.23 | 243,662 |
| 29/01/21 | PPSP | 1,540 | 1,540 | 1,470 | 1,500 | -20.00 | ▼1.30% | 67,335 | 101,289,750 | 25,322.44 | 107,813 |
| | PAS | 13,900 | 13,940 | 13,900 | 13,920 | -20.00 | ▼0.14% | 240 | 3,339,360 | 834.84 | 1,193,946 |
| | NEW | 16,840 | 17,320 | 16,780 | 17,320 | 480.00 | ▲2.85% | 11,857 | 200,971,380 | 50,242.85 | 7,502,383 |
| | PEPC | 2,950 | 2,950 | 2,940 | 2,940 | -10.00 | ▼0.33% | 187 | 550,930 | 137.73 | 220,338 |
| | Index | 641.95 | 643.80 | 639.12 | 640.94 | 0.97 | ▲0.15% | 32,855 | 178,266,270 | 44,567 | 9,720,994 |
| | PPWSA | 6,100 | 6,100 | 6,100 | 6,100 | 0.00 | 0.00% | 390 | 2,379,000 | 594.75 | 530,536 |
| | GTI | 3,210 | 3,210 | 3,210 | 3,210 | -290.00 | ▼8.28% | 310 | 995,100 | 248.78 | 128,400 |
| | PPAP | 11,680 | 11,760 | 11,600 | 11,680 | 0.00 | 0.00% | 267 | 3,109,360 | 777.34 | 241,593 |
| | PPSP | 1,500 | 1,530 | 1,480 | 1,520 | 30.00 | ▲2.01% | 22,961 | 34,491,010 | 8,622.75 | 109,250 |
| 28/01/21 | PAS | 14,000 | 14,000 | 13,500 | 13,940 | 40.00 | ▲0.28% | 3,058 | 41,785,820 | 10,446.46 | 1,195,661 |
| | ABC | 16,860 | 16,900 | 16,800 | 16,840 | -20.00 | ▼0.11% | 5,639 | 94,827,480 | 23,706.87 | 7,294,465 |
| | PEPC | 2,950 | 2,950 | 2,950 | 2,950 | 0.00 | 0.00% | 230 | 678,500 | 169.63 | 221,088 |

Source: Data from CSX, and Compiled by ACS

Source: Data from CSX, and Compiled by ACS

*Exchange Rate: USD1=KHR 4,000

DISCLAIMER

ALL RESEARCH is based on material compiled from data considered to be reliable at the time of writing. However, information and opinions expressed will be subject to change at short notice, and no part of this report is to be construed as an offer or solicitation of an offer to transact any securities or financial instruments whether referred to herein or otherwise. We do not accept any liability directly or indirectly that may arise from investment decision-making based on this report. The company, its directors, officers, employees and/or connected persons may periodically hold an interest in the securities mentioned.

All Rights Reserved. No part of this publication may be used or re-produced without expressed permission from **ACLEDA SECURITIES PLC.**

ACLEDA IN GROUP

ACLEDA BANK PLC.

HEADQUARTERS

61, Preah Monivong Blvd., Sangkat Srah Chork,
Khan Daun Penh, Phnom Penh, Kingdom of Cambodia.
P.O. Box: 1149
Tel: (855) 23 998 777 / 430 999
Fax: (855) 23 998 666 / 430 555
E-mail: acledabank@acledabank.com.kh
Website: www.acledabank.com.kh
SWIFT: ACLBKHPP

ACLEDA BANK PLC.

CASH SETTLEMENT, SECURITIES REGISTRAR, SECURITIES TRANSFER, AND
PAYING AGENT

HEADQUARTERS

61, Preah Monivong Blvd., Sangkat Srah Chork,
Khan Daun Penh, Phnom Penh, Kingdom of Cambodia.
P.O. Box: 1149
Tel: (855) 23 998 777 / 430 999
Fax: (855) 23 998 666 / 430 555
E-mail: acledabank@acledabank.com.kh
Website: www.acledabank.com.kh
SWIFT: ACLBKHPP

ACLEDA BANK LAO LTD.

HEADQUARTERS

#398, Corner of Dongpalane and Dongpaina Road, Unit 20,
Phonesavanh
Neua Village, Sisattanak District, Vientiane Capital, Lao PDR.
P.O. Box: 1555
Hotline :1800
Tel: +856 (0)21 264 994 / 264 998
Fax: +856 (0)21 264 995/ 219 228
E-mail: acledabank@acledabank.com.la
Website: www.acledabank.com.la
SWIFT: ACLBLALA

ACLEDA SECURITIES PLC.

HEADQUARTERS

5th Floor, ACLEDA Building
61, Preah Monivong Blvd., Sangkat Srah Chork,
Khan Daun Penh, Phnom Penh, Kingdom of Cambodia.
Tel: (855) 23 723 388 / 999 966 / 999 977
Email: acs.rep@acledasecurities.com.kh
Website: www.acledasecurities.com.kh

ACLEDA INSTITUTE OF BUSINESS

HEADQUARTERS

Address: #1397, Phnom Penh-Hanoi
Friendship Blvd., Phum Anlong Kngan, Sangkat Khmuonh, Khan
Saensokh, Phnom Penh, Kingdom of Cambodia
P. O. Box: 1149
Tel: + 855 (0)23 881 790 / 999 944
E-mail: info@acleda-aib.edu.kh
Website: www.acleda-aib.edu.kh

ACLEDA MFI MYANMAR Co., LTD.

HEADQUARTERS

#186(B), ShweGonTaing Road, Yae Tar Shae Block,
Bahan Township, Yangon Region,
The Republic of the Union of Myanmar.
Tel: (+95-1) 559 475 / 552 956
Website: www.acledamfi.com.mm